

# TRACE Webinar

## *Online TRACE eLearning Hub*

Alexandra Ernst, MPH  
Strategic Information Program Manager

5/8/19

# TRACE – Tracking with Recency Assays to Control the Epidemic

Our goal is to use a point-of-care (POC) test for recent infection to provide continuous epidemiological data on person, place, and time of newly diagnosed individuals to inform HIV prevention and control strategies.

# Overview of Webinar

## Vision of TRACE eLearning Hub

- Objectives
- Target Audience
- Intended Use and Features

Walkthrough of TRACE eLearning Hub, including available resources such as:

- Training materials
- Forms, guides, checklists
- SOPs and job aids
- CQI Toolkit

Discussion about Engagement

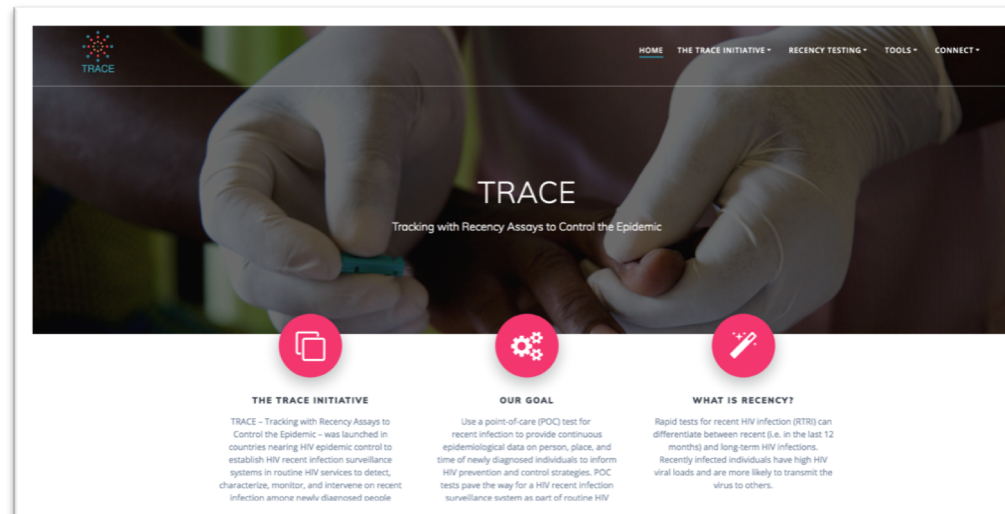
# Objectives of TRACE eLearning Hub

1. Provide a detailed background of recent HIV infection testing and the TRACE Initiative
2. Create an accessible document repository of generic materials to support implementation of recent HIV infection surveillance
3. Maintain a 'living' source of recent HIV-infection updates, guidance, and news, including country-specific updates
4. Foster inter- and cross-country collaboration and sharing of best practices and lessons learned
5. Host real-time data dashboards to support visualization of recent HIV infection data to track the epidemic and inform prevention efforts

# Target Audience\* of TRACE eLearning Hub

- PEPFAR and agency country offices
- Ministries of Health
- Implementing partners, at all levels:
  - Site, subnational, and national
  - International TA partners, such as UCSF and ICAP
- General public

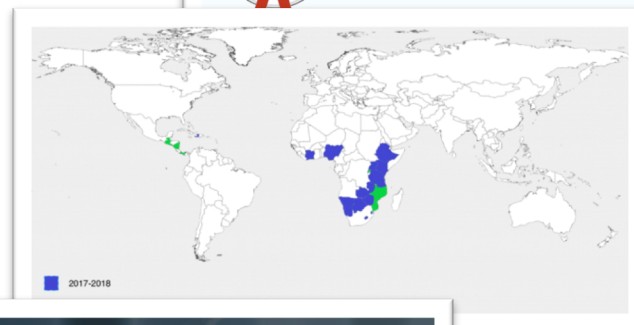
\*Limited access will vary by user



# Intended Use and Features of TRACE eLearning Hub

- TRACE Initiative overview:
  - Background
  - Technical leadership & support
  - About TRACE
- Recent HIV Infection Testing overview:
  - About
  - Importance
  - FAQ

Partner	Members	Role
UCSF	Dr. George Rutherford ( <a href="mailto:george.rutherford@ucsf.edu">george.rutherford@ucsf.edu</a> )	Principal Investigator
	Suzie Welby ( <a href="mailto:suzie.welby@ucsf.edu">suzie.welby@ucsf.edu</a> )	Technical Lead
ICAP Columbia University Mailman School of Public Health	Dr. Jessica Justman ( <a href="mailto:j2158@cumc.columbia.edu">j2158@cumc.columbia.edu</a> )	Principal Investigator
	Suzue Saito ( <a href="mailto:ss1117@cumc.columbia.edu">ss1117@cumc.columbia.edu</a> )	Technical Lead
PEPFAR U.S. Department of Health and Human Services	Andrea Kim ( <a href="mailto:bwk2@cdc.gov">bwk2@cdc.gov</a> )	Co-Leads of PEPFAR TRACE Community of Practice
	Bharat Parekh ( <a href="mailto:bpas1@cdc.gov">bpas1@cdc.gov</a> )	



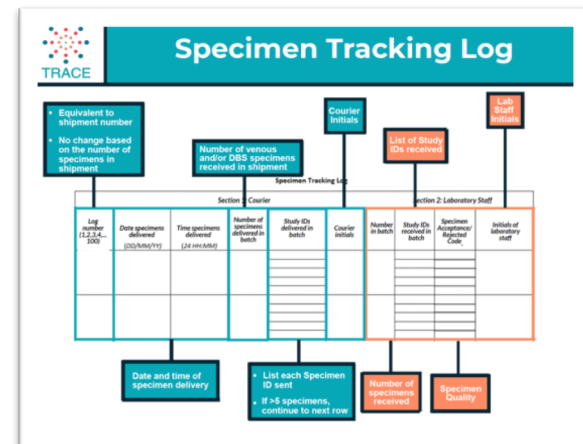
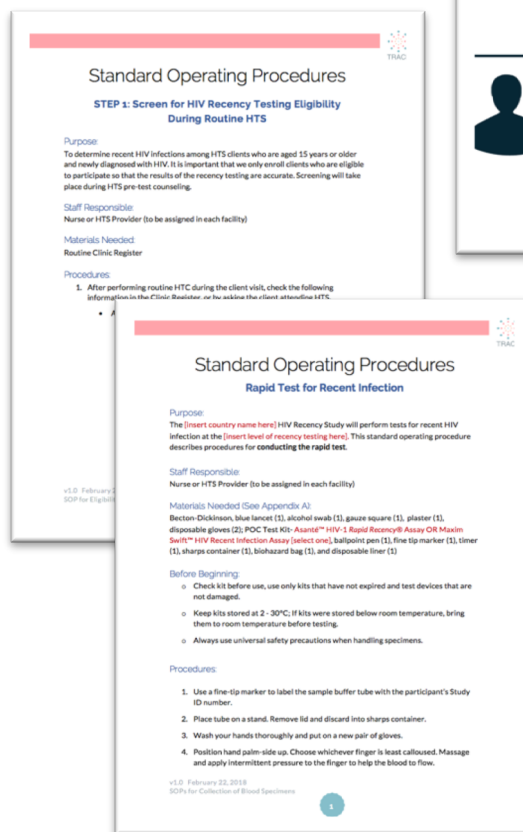
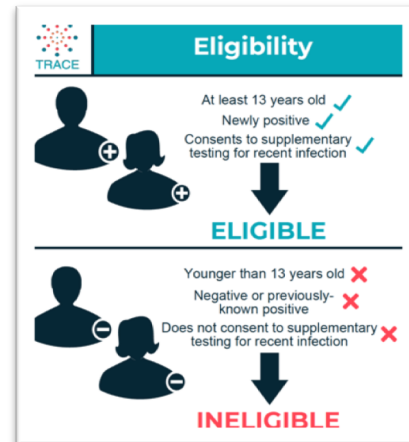
## FAQs

- + What is a rapid test for HIV-1 recent infection (RTRI)?
- + What is a recent HIV-1 infection?
- + Why is it important to identify recent HIV-1 infection?
- + What is a transmission cluster and why is it important?
- + What proportion of persons newly diagnosed with HIV is expected to be recent?
- + Who can perform the RTRI?
- + Who makes RTRI tests?

# Intended Use and Features of TRACE eLearning Hub

- Document repository with generic versions of:

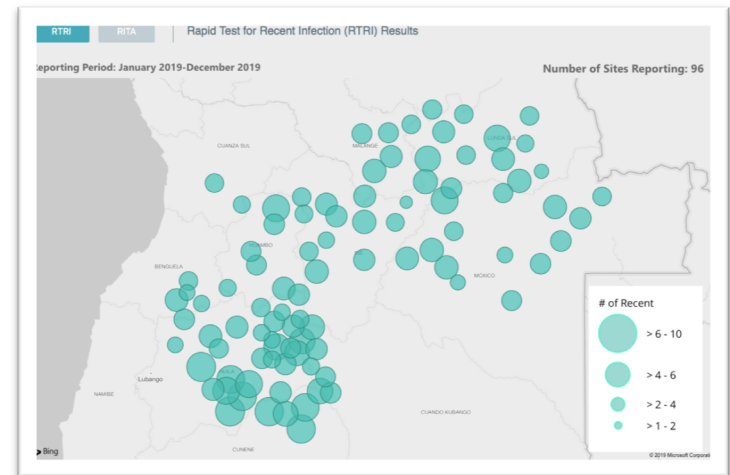
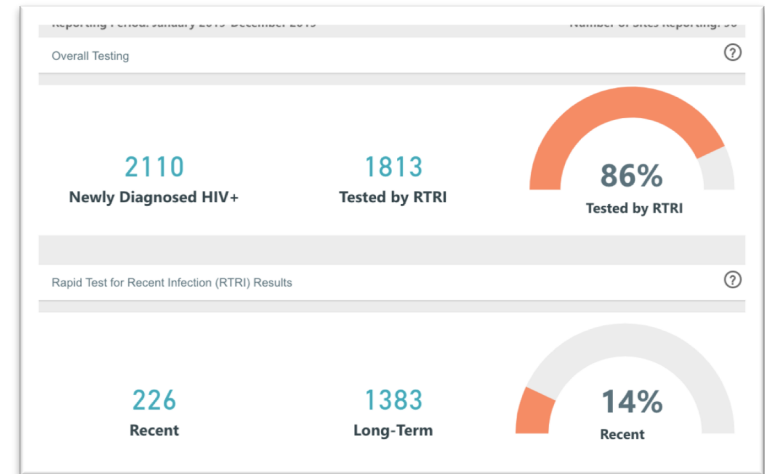
- Protocol
- Training modules and videos
- SOPs and job aids
- Forms, checklists, logbooks, registers, etc.
- Continuous Quality Improvement (CQI) tools





# Upcoming Features of TRACE eLearning Hub

- Data dashboards to visualize recent infection data, such as:
  - Outcome indicators:
    - Number of individuals with recent HIV infection by RTRI/RITA
    - Number of individuals with recent HIV infection (RITI and/or RITA), per 1000 persons newly diagnosed HIV-negative
    - Percentage of individuals with recent HIV infections out of persons newly diagnosed HIV-positive

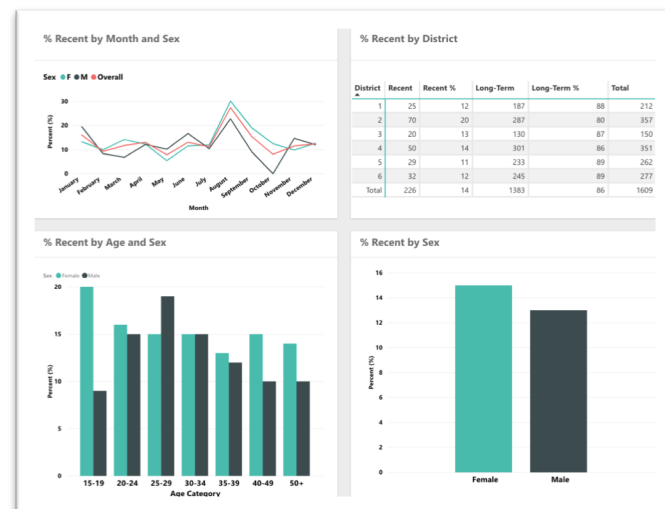
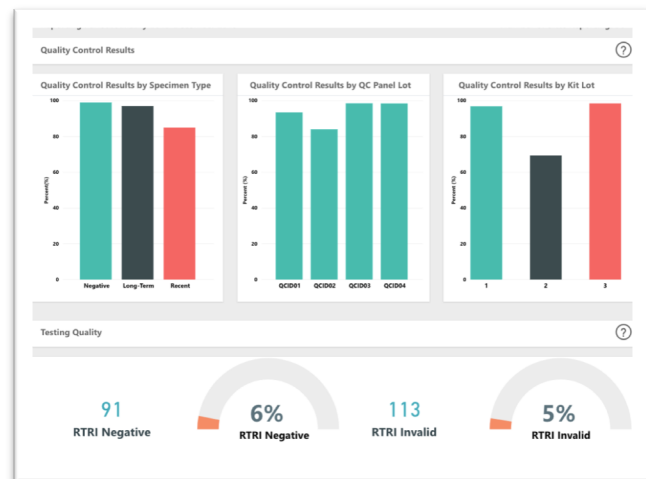




# Upcoming Features of TRACE eLearning Hub

- Data dashboards to visualize recent infection data, such as:
  - Process indicators:
    - Time (in days) from date of sample collection to date of RITA result returned to HTS\*
    - Percentage of specimens collection with testing quality issues
    - Percentage of individuals missing recency results, out of persons newly diagnosed HIV-positive\*
    - Percentage of recent panels confirmed as recent in QC runs, out of QC panels tested


\*For countries returning results



# Upcoming Features of TRACE eLearning Hub

- Connect features, such as:
  - Webinar hosting
  - News stories and updates
  - Discussion boards/chat groups
  - Contact Us





# Walkthrough of Online TRACE eLearning Hub

[www.trace-recency.org](http://www.trace-recency.org)



# Discussion about Engagement



How can we promote cross-country learning and collaboration on the eLearning Hub?

What other features would you like to see included on the eLearning Hub?

Any other recommendations or  
initial feedback?



Thank you!



University of California  
San Francisco